

Increasing the Pneumococcal and Influenza vaccination hospitalized patients

Dr. Robyn Poteet
Dr. Amruta Parekh

*University of Texas Health Science Center at San Antonio
San Antonio, TX*

CONTACT

Robyn Poteet, M.D.
(210) 358-1944
poteetr@uthscsa.edu

TEAM

- PHYSICIANS

Hospital Medicine – Robyn Poteet

- FACILITATOR

Amruta Parekh, MD, MPH

- NURSING

- PHARMACY

- SOCIAL WORK

- TECH/STATISTICAL SUPPORT

Wayne Fischer, MS, PhD

Need team picture

Please fill in the names...




LIST OF CUSTOMERS

- PATIENTS
- PROVIDERS
- NURSING
- PHARMACY
- HOSPITAL ADMINISTRATION



BACKGROUND

- *Literature....*



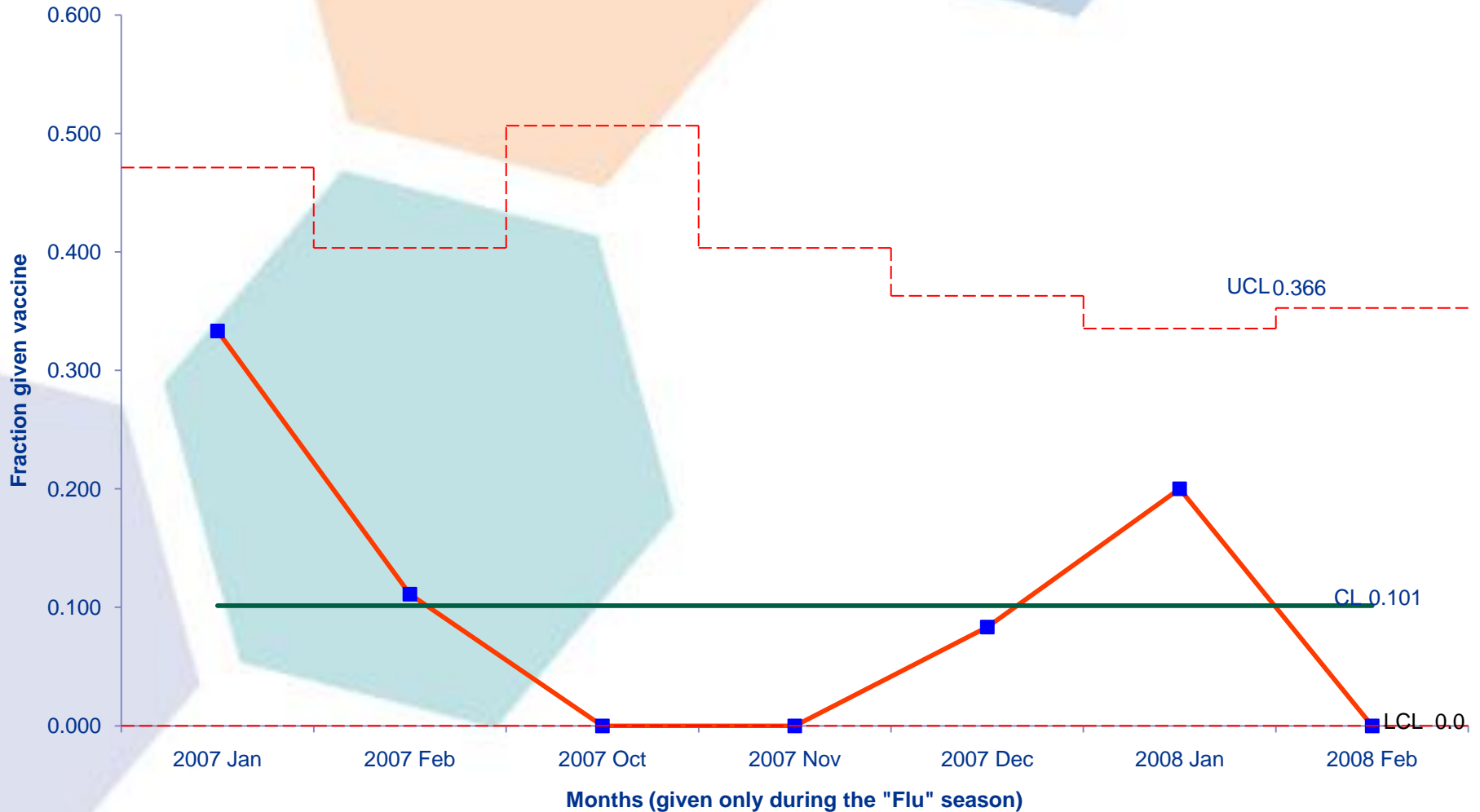
Please fill in
some literature
justifying the
aim statement



AIM STATEMENT

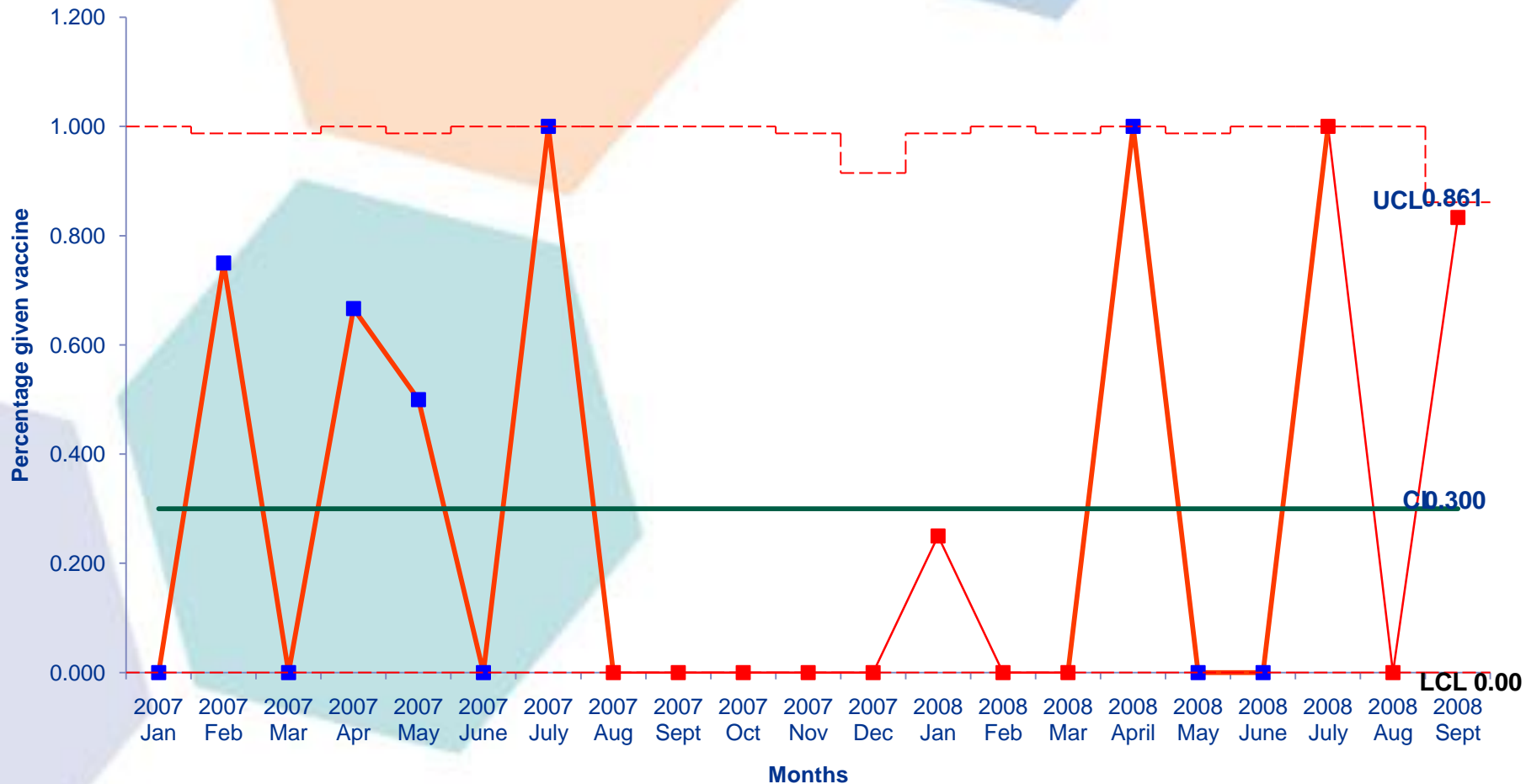
**To increase the rate of
Pneumococcal and Influenza
vaccination by 20% over a period
of 4 months in patients
hospitalized with Pneumonia**

Preintervention data for Influenza Vaccine



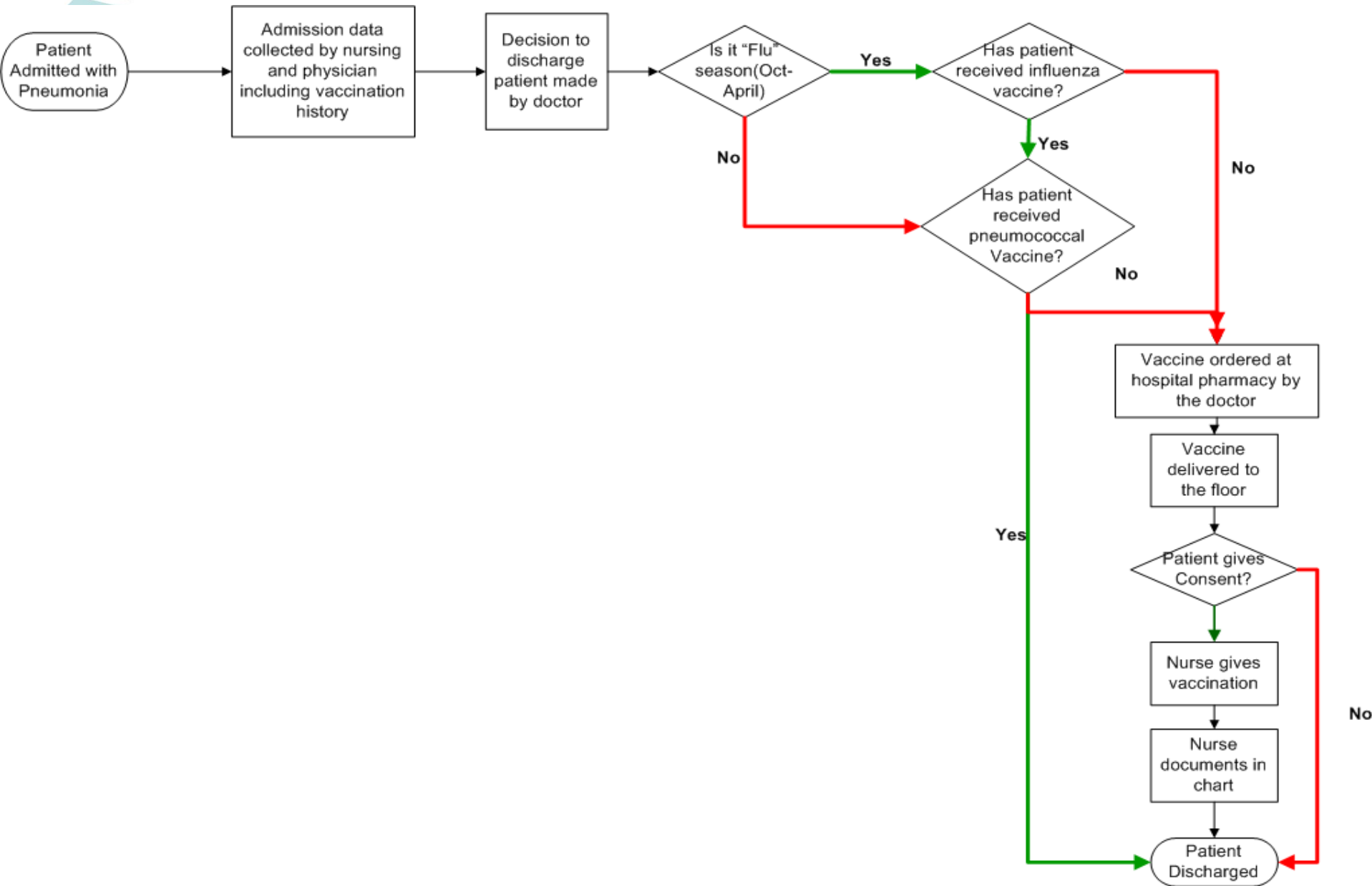
Only 10% of eligible patients were receiving the vaccine on discharge !

Preintervention data for Pneumococcal Vaccine

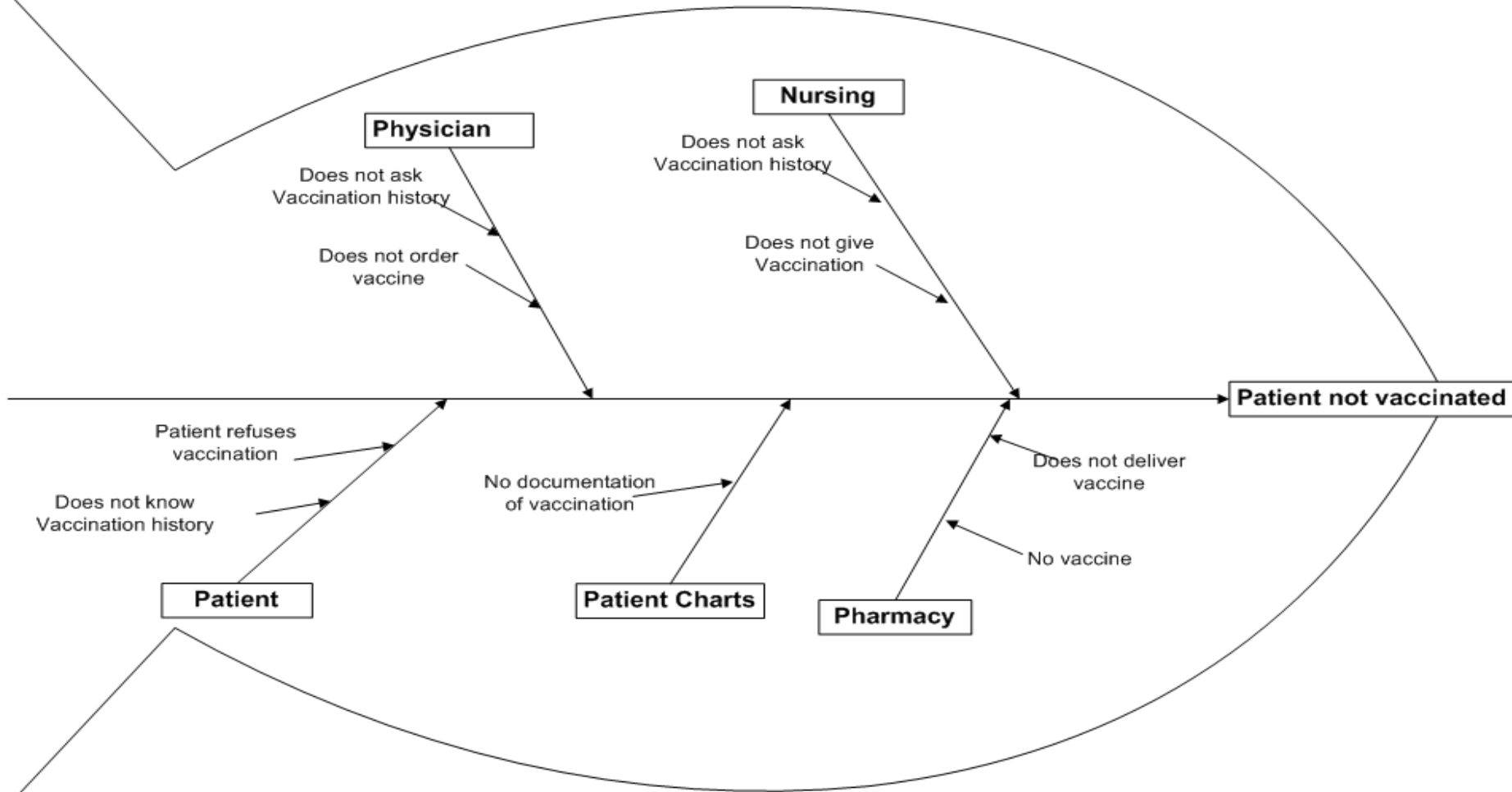


***Only 30% of eligible patients were receiving the vaccine on discharge !
There was a lot of variation too.***

PROCESS FLOW - Pre Intervention



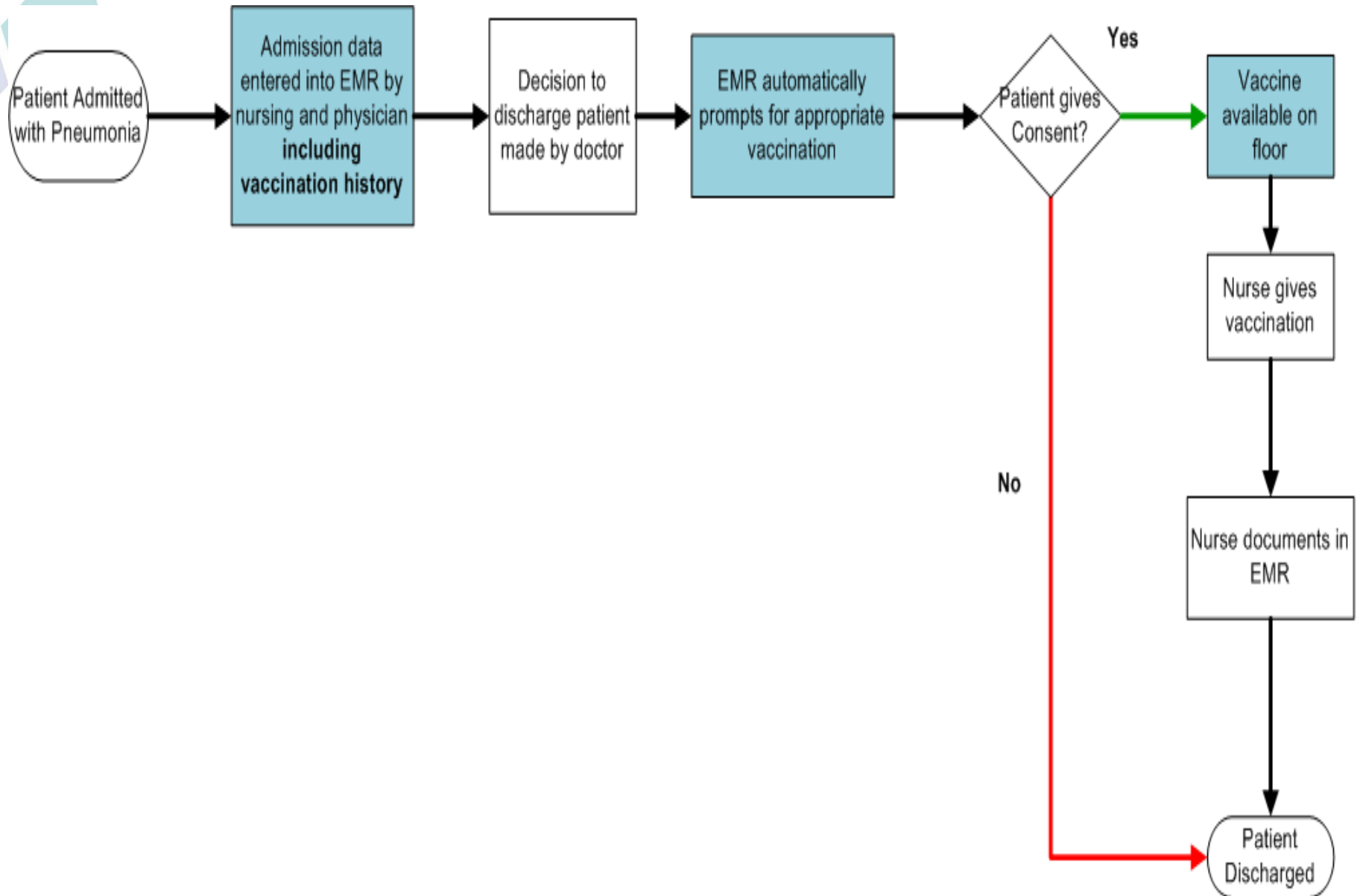
CAUSE & EFFECT DIAGRAM



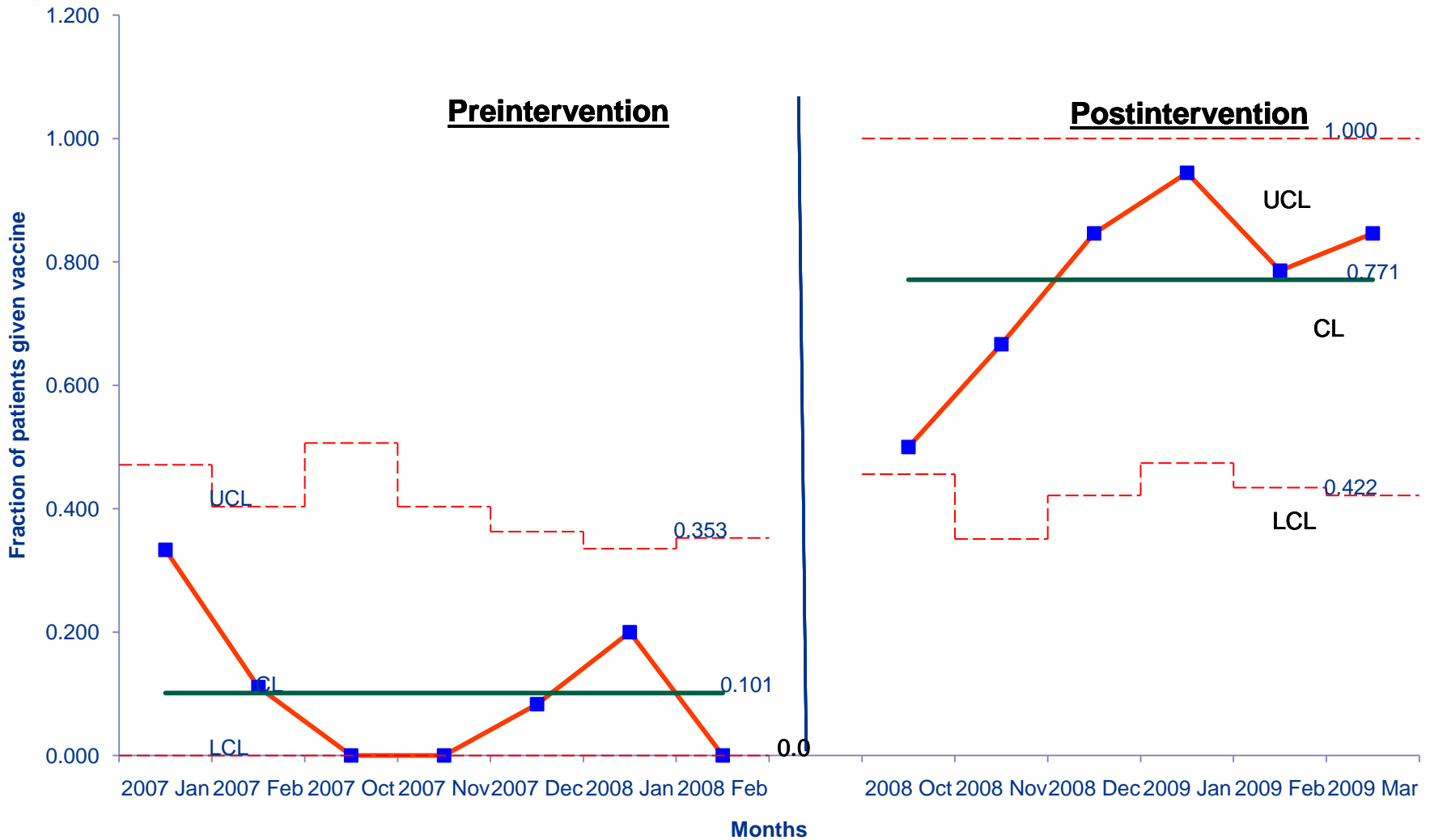
Intervention

- Team discussed the process
- **Found out:**
- Too cumbersome
- Missed some of the patients due to lack of immunization records on charts
- Delay in getting vials from Pharmacy led to delayed discharge or even patient refusal
- **Action taken**
- Have immunization data on electronic medical record (EMR) on admission.
- Have vaccine vials on patient floors

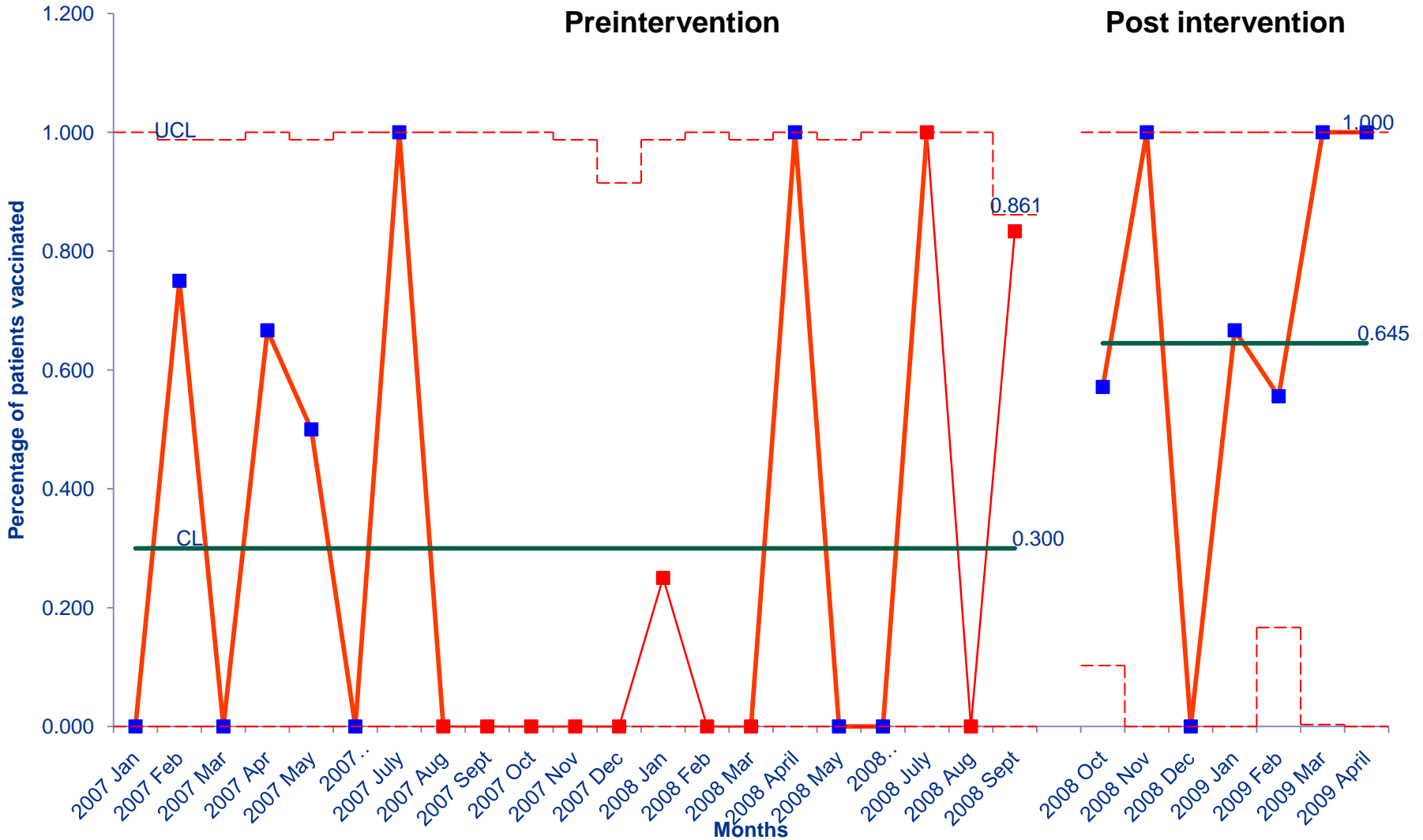
PROCESS FLOW - Post Intervention



Comparison of Pre and Post intervention Influenza Vaccination in patients



Comparison of Pre and Post intervention Pneumonia Vaccination in patients



RESULTS

- Influenza vaccination: Increased number of immunized patients from 10% to 70%
- Pneumococcal vaccination: Increased number of immunized patients from 30% to 64.5%
- More streamlined process
- Faster ..as vaccine available on floor
- Less duplication of work as EMR captured data

RETURN ON INVESTMENT

We put in...

- Cost of vaccine on floor
- Start-up cost = **\$**
- *could include storage??*
- Yearly cost = **\$**

We hope to achieve...

- Approx ?? medicine admissions/month
- Average ?? Get vaccinated per month
- **\$ generated**

WHERE ARE WE GOING?

Other possible interventions:

PERTINENT POINTS FROM LITERATURE

CONCLUSIONS

- **Baseline process was extremely complicated and involved lot of steps.**
- **Critical evaluation of the process enabled us to identify simple solutions that made a big difference.**
- **Seeing the variability in the SPC chart before and after intervention showed surprising but reassuring results.**
- **Knowledge of basic tools was integral to visualizing the goal and achieving the aims.**

QUESTIONS?





Thank You



CENTER FOR PATIENT SAFETY & HEALTH POLICY
UT HEALTH SCIENCE CENTER™
WE MAKE LIVES BETTER

Educating for Quality Improvement & Patient Safety